



SHAHEED CAPTAIN RIPUDAMAN SINGH RAJKIYA MAHAVIDYALAYA,SAWAI MADHOPUR

ORGANOGRAM

GOVERNMENT OF RAJASTHAN (Department of Higher Education)

COMMISSIONERATE OF COLLEGE EDUCATION RAJASTHAN , JAIPUR

↓
COMMISSIONER

↓
PRINCIPAL

←-----→
ACADEMICS

ESTABLISHMENT

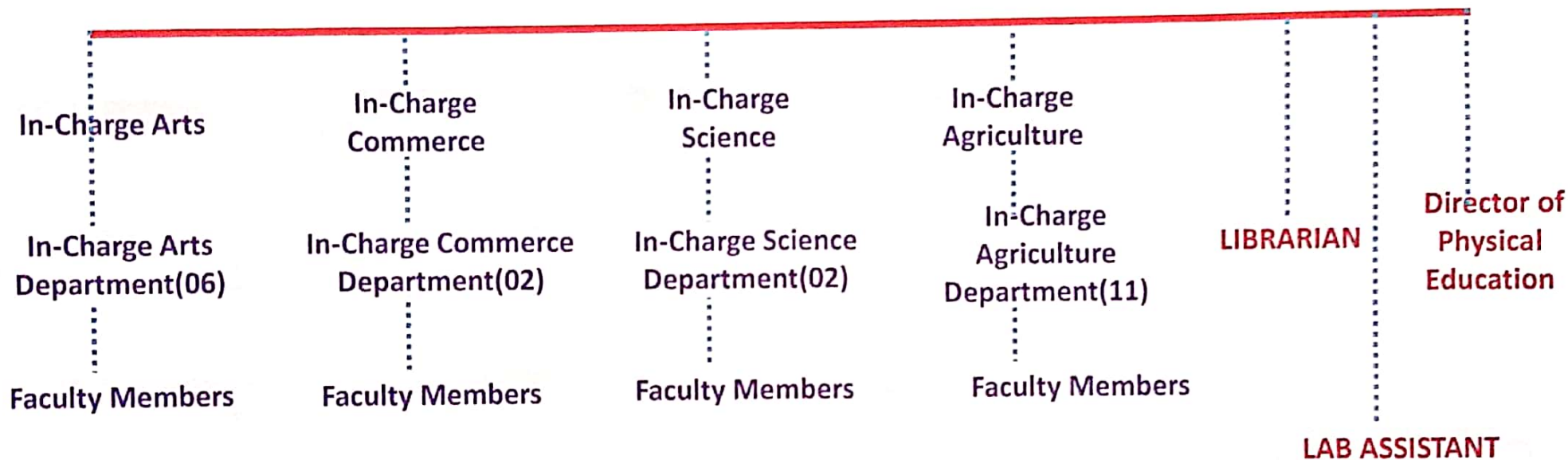
SUPPORT SYSTEM



SHAHEED CAPTAIN RIPUDAMAN SINGH RAJKIYA MAHAVIDYALAYA,SAWAI MADHOPUR

ORGANOGRAM- ACADEMICS

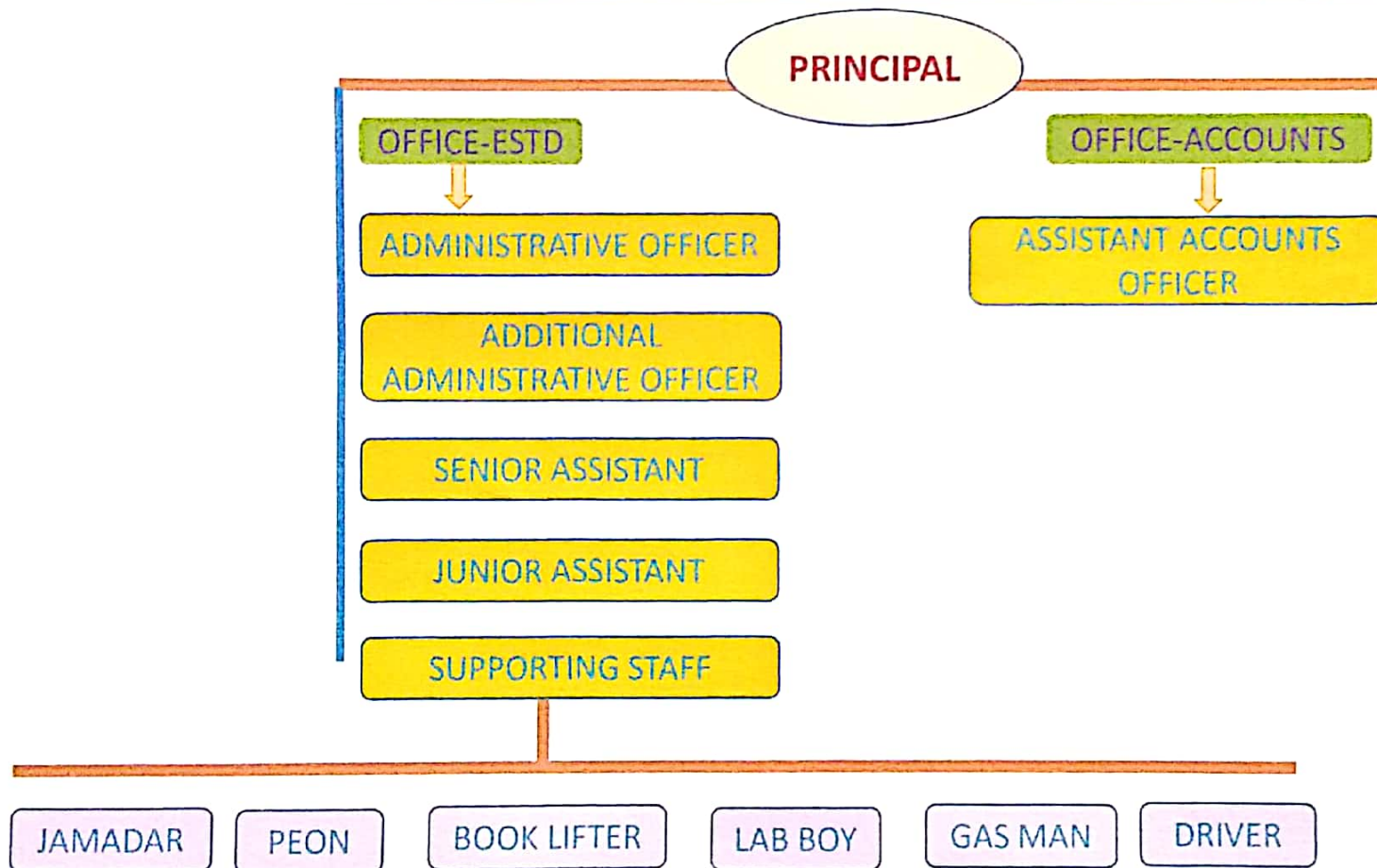
PRINCIPAL





SHAHEED CAPTAIN RIPUDAMAN SINGH RAJKIYA MAHAVIDYALAYA,SAWAI MADHOPUR

ORGANOGRAM- ESTABLISHMENT



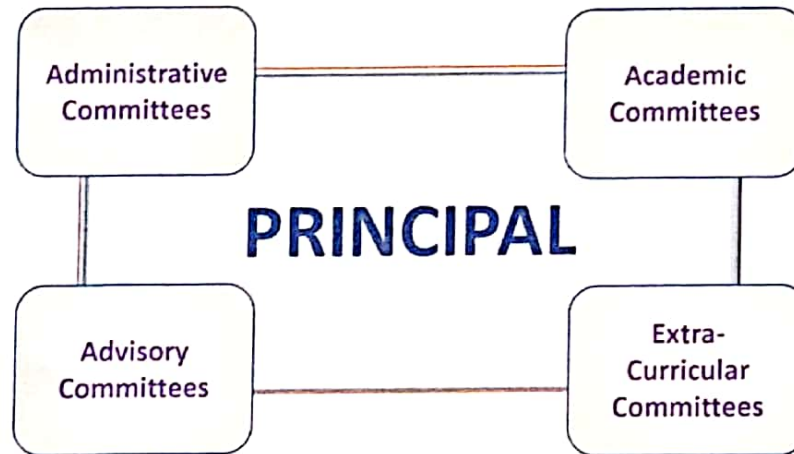


SHAHEED CAPTAIN RIPUDAMAN SINGH RAJKIYA MAHAVIDYALAYA,SAWAI MADHOPUR

ORGANOGRAM- SUPPORT SYSTEM

- IQAC
- UGC
- RUSA
- EQUAL OPPORTUNITY CELL
- COLLEGE DEVELOPMENT
- SAMPARK/RTI/E-GOVERNANCE
- STORE
- PURCHASE
- SCHOLARSHIP
- ICC/GRC/ANTI RAGGING

- NSS ADVISORY CELL
- STUDENTS UNION ADVISORY CELL



- TIME-TABLE
- E-LEARNING
- EXAMINATION CELL
- RESEARCH DEV CELL
- DISCIPLINE
- LIBRARY

- WOMEN'S CELL
- ELC CLUB
- PLACEMENT CELL
- NSS,NCC,ROVERING& RANGERING
- CULTURAL,& SPORTS
- ECO CLUB
- INNOVATION AND SKILL DEV CELL

[Handwritten signature]

[Handwritten signature]
प्राचार्य
शाहीद कैप्टन रिपुदामन सिंह
राजकीय महाविद्यालय ग.मा. (राज.)