

III Periodicals

Subject Code TD-104

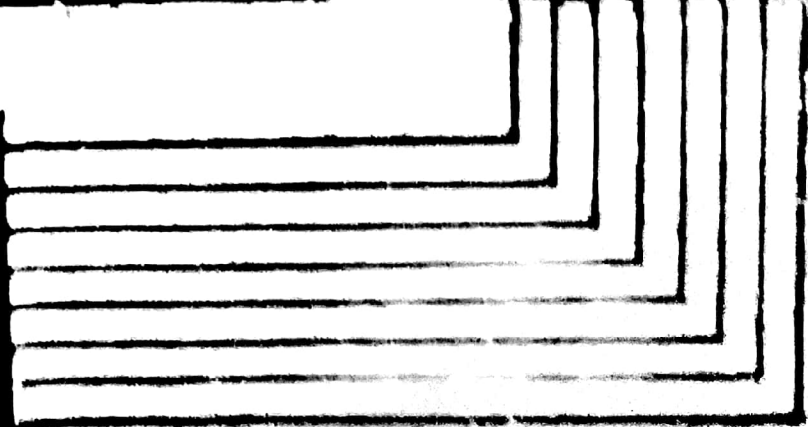
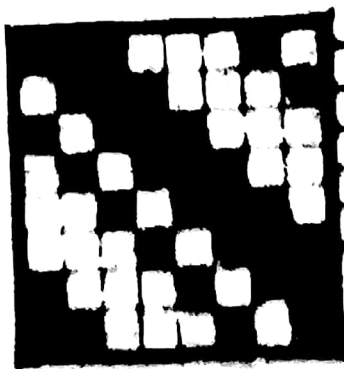
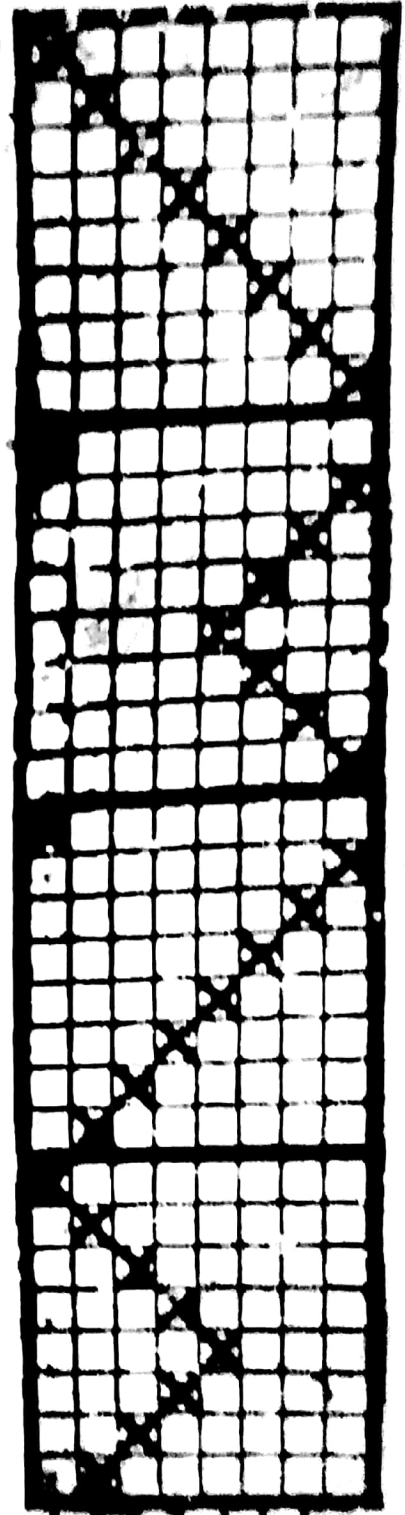
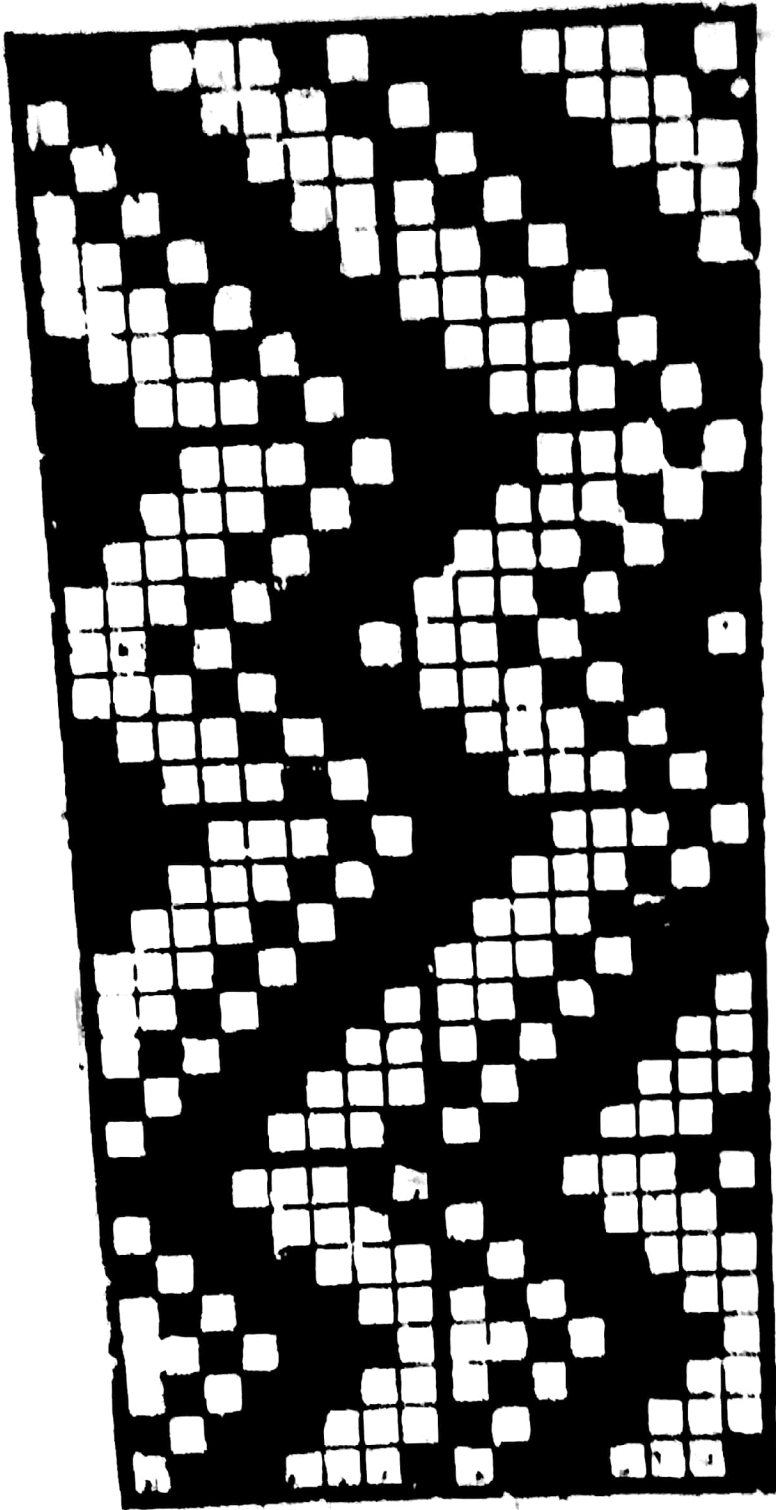
I year

Structural Fabric Design. - 3

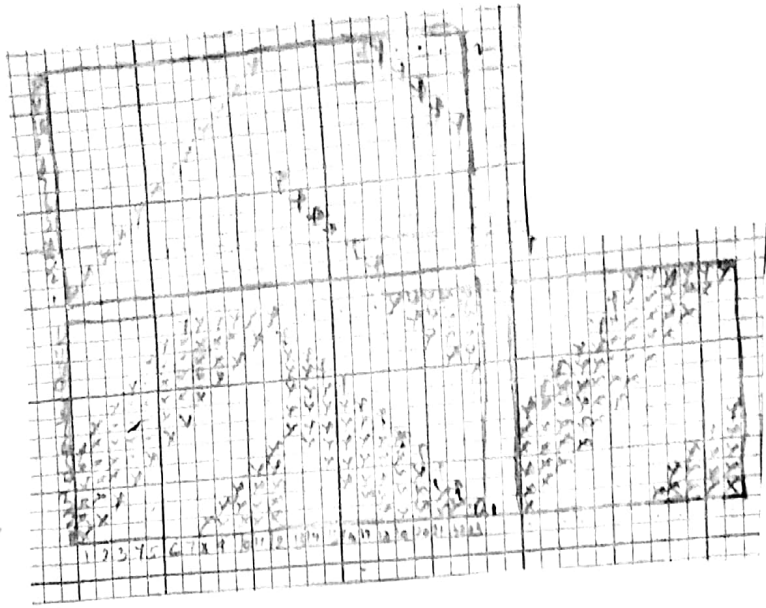
out of four Attempt any three

M.M. - 15

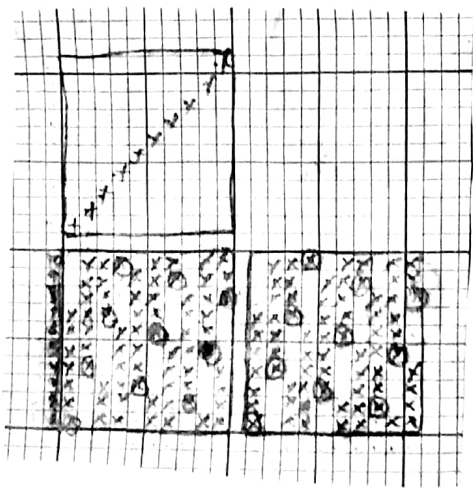
(i) Draw a waved twill



(ii) Draw Herringbone weave



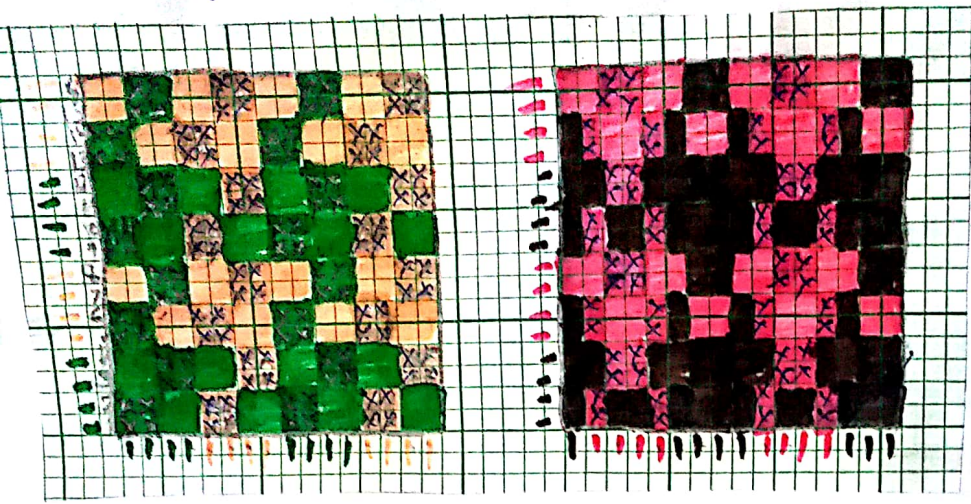
Q.2 (i) Draw an elongated twill weave



Q.2 (ii) Write down the formula for the calculation of twill angle.

$$\tan \alpha = \frac{\text{Rate of advancement of twill upwards}}{\text{Rate of advancement of twill outwards}} \times \frac{\text{Ends/cm}}{\text{Picks/cm}}$$

Q. 3 Draw two waves of same pattern & different colour sequence.



W. K. Singh
21/05/2020