

SETH SHREE KEDARNATH MODI RAJKIYA MAHAVIDHALYA, GUDHA (JHUNJHUNU)



Introduction (College information) :-

Seth Shree Kedarnath Modi Rajkiya Mahavidyalaya Gudha, established in September 2013, stands as a beacon of educational excellence. With a steadfast commitment to providing quality education and serving the nation, the college has come a long way in its journey. This document serves as a reflection of our institution's vision, achievements, and future plans.

❖ Affiliation and Location:

Seth Shree Kedarnath Modi Rajkiya Mahavidyalaya Gudha is currently affiliated with the Pandit Deendayal Upadhyaya Shekhawati University, Sikar, marking a significant milestone in its history. Previously, it was affiliated with the University of Rajasthan, Jaipur. Nestled in the serene town of Gudha-Gorji, along the Jhunjhunu-Udaipurwati state highway, the college is conveniently located just 35 km from Jhunjhunu city. The grand architectural marvel that houses **our college was generously constructed by Bhamashah Seth Shri Krishan Kumar Modi, Chief Trustee of the Mani Modi Foundation, Kolkata, as a tribute to his revered father, Seth Shri Kedar Nath Modi.** The college's infrastructure includes 27 spacious rooms and a sprawling playground. Its picturesque setting alongside the Aravali Mountains captures the attention of passersby.

I, as the Principal of Seth Shree Kedarnath Modi Rajkiya Mahavidyalaya in Jhunjhunu, extend a warm and heartfelt welcome to all. Our esteemed institution has a history dating back to 2013, during which we have continuously evolved, creating an environment that fosters a culture of not only high academic excellence but also a vibrant tapestry of cultural activities for our students. Over time, we have proudly etched our place as a distinguished institution of higher learning within Rajasthan. At our Mahavidyalaya, our profound commitment is to empower our students holistically. We are dedicated to nurturing their academic prowess, tending to their spiritual well-being, fostering integrity in their conduct, and nurturing a sense of moral consciousness. Our institution has grown to be the preferred destination for bright, reflective, and ambitious students who are seeking an education that goes beyond textbooks, one that truly transforms lives.



We take immense pride in consistently meeting the heightened expectations of today's students. Our faculty members are not just lecturers; they are active partners in the learning process. They create an inclusive environment that allows our students to make meaningful contributions that extend far beyond the boundaries of the classroom. Over the past nine years, our students have exhibited excellence in both the realms of sports and academics. This is a testament to our unwavering commitment to their all-encompassing development. Our teaching and learning methodologies are in a perpetual state of evolution, seamlessly adapting to the changing times and technological advancements. In our pursuit of educational excellence, we align ourselves with the philosophy articulated by *Martin Luther King Jr.:* "The function of education is to teach one to think intensively and to think critically. Intelligence plus character - that is the goal of true education." In conclusion, our dedication lies in providing a transformative education, one that equips our students with not just knowledge but also the essential skills, values, and character needed for success in an ever-evolving and dynamic world.

Warm regards,

Prof(Dr) Anita Jhajhria
PRINCIPAL

TABLE OF CONTENTS

S.NO.	CONTENTS	PAGE
1.	INTRODUCTION	1-4
2.	SWOC- STRENGHT, WEAKNESSES, OPPORTUMITIES AND CHALLENGES	5-6
3.	CORE VALUE	7-9
4.	VISSION & MISSION	10-13
5.	CODE OF CONDUCT (FOR VISITORS, STAFF, STUDENTS)	14-16
6.	THE PROFILE	17-22
7.	IQAC	23-24
8.	FEES STRUCTURE	25
9.	AMENITIES : BOTANICAL GARDEN, DIGITAL CAMPUS, SMART LIBRARY, NSS, SPORTS, SCHOLARSHIPS	26-31
10.	FUTURE ROAD MAP	32
11.	ORGANOGRAM	33

SETH SHREE KEDARNATH MODI RAJKIYA MAHAVIDHALYA, GUDHA, JHUNJHUNU SWOC Analysis

STRENGTHS

- ❖ Situated in Gudha which is well-known educational hub in rural area in Shekhawati region with Green & Clean Campus.
- ❖ Registered under sections 2(F) and section 12(B) is under process with UGC.
- ❖ Transparency, diversity, and inclusiveness in the admission process.
- ❖ Well-equipped labs in Geography and computer science.

WEAKNESSES

- ❖ Dealing with first generation learners.
- ❖ Lack of autonomy.
- ❖ Lacking of multi faculty and PG courses.
- ❖ Lack of small and big industry in area.
- ❖ No vocational courses.
- ❖ Paucity of consultancy and exchange programmes.
- ❖ Insufficient incubation and startups

OPPORTUNITIES

- ❖ There are ample chances to start number of skill development and vocational courses.
- ❖ Use of knowledge and resources for development of e-content and e-resources.
- ❖ Professional development programmes and trainings for teaching and non-teaching staffs.
- ❖ Enhancing employability opportunities
- ❖ Encouraging industry collaboration and consultancy
- ❖ Organization of national and International seminar and conferences
- ❖ The College has opportunities to undertake location specific research work relevant to rural agrarian needs.
- ❖ Scope for further utilization of College building

CHALLENGES

- ❖ Teaching and non-teaching ratio in proportion to work load and student strength
- ❖ Financial constraints
- ❖ Creating sufficient job opportunities
- ❖ High cost of maintenance of infrastructure.
- ❖ Enabling the students to improve their oral English communication to cope-up with global competencies
- ❖ Improvisation in pedagogical use of ICT enabled teaching –learning

CORE VALUE

COMMITMENT :-

- ✓ To Support the mission and vision of the institution.
- ✓ To Focus on teaching inside and outside the classroom.
- ✓ To Contribute towards enhancement of subject knowledge beyond the curriculum.
- ✓ To Continuously analyze and evaluate every objective and
- ✓ To Make honest efforts to improve

QUALITY AND EXCELLENCE

- ✓ Emphasis on delivering quality education by highly qualified teaching staff.
- ✓ Updating the curriculum as per suggestions and needs of Stakeholders.
- ✓ Encourage creativity and innovation among Staff and Students.
- ✓ Encourage self-worth team spirit and competitive spirit by promoting co-curricular and extra-curricular activities.

SOCIAL SENSITIZATION

- ✓ Provide fair and equal access to students from rural and urban backgrounds.
- ✓ Provide social equity and strengthening diversity of students.
- ✓ Promote girl education.
- ✓ Sensitization towards differently abled persons and Students.
- ✓ Gender Sensitization and sense of equality among different genders.

Vision and Mission:-

Vision :-

The vision of Seth Shree Kedarnath Modi Rajkiya Mahavidyalaya Gudha is to be a beacon of quality education with a student-centric approach. Rooted in the core belief of "*Vidya Dadati Vinayam*," we aim to nurture not only academic excellence but also instill moral values in our students.

Mission -

❖ **Empowering Rural Youth with Quality Education: -**

Our primary mission is to empower the youth in rural areas with access to high-quality education. We aspire to bridge the educational divide and create opportunities for students from all backgrounds to achieve their full potential.

❖ **Instilling Integrity, Discipline, Perseverance, and Confidence:-** Through a conducive teaching and learning environment, we are committed to instilling the values of integrity, discipline, perseverance, and confidence in our students. We believe that these qualities are essential for personal and professional growth, and we strive to nurture them in each student who passes through our institution.

❖ **Fostering Holistic Development:-**

We are dedicated to promoting holistic development by not only focusing on academic knowledge but also on the overall growth of our students. We aim to develop well-rounded individuals who are equipped to face the challenges of the future with competence and character.

❖ **Promoting Excellence in Education:-**

Our mission is to continuously raise the bar of educational excellence. We are committed to providing a dynamic and enriching learning experience, nurturing critical thinking, and fostering a spirit of innovation and inquiry among our students.

❖ **Community Engagement and Social Responsibility:-**

We recognize our responsibility to the communities we serve. We aim to be an active participant in community development and social causes, contributing positively to the well-being of the regions we are a part of.

In summary, Seth Shree Kedarnath Modi Rajkiya Mahavidyalaya Gudha envisions a future where quality education and strong moral values go hand in hand. Our mission is to empower rural youth, nurture their character, and promote excellence in education, thereby contributing to their personal growth and the betterment of society as a whole.

CODE OF CONDUCT FOR VISITORS :-

- ❖ Once someone is in the campus, he/she should be polite, respectful and well mannered.
- ❖ Once entered the premises, one should not pose any harm to any physical property of the institution including Building, Plantation and equipment.
- ❖ Anti-social activities would be liable to report to nearest Police Station.
- ❖ Consumption of tobacco in any form, drug etc. is completely prohibited.
- ❖ The campus must be kept clean. One should refrain from scribing on walls or to litter anywhere in the campus but in the dustbins.

CODE OF CONDUCT FOR STAFF :-

- ❖ It is expected of the staff to uphold the honour and dignity of the Profession and of Institution.
- ❖ Exercise self-discipline, honesty and integrity. Staff must provide quality services to Students.
- ❖ Be impartial, friendly, help, guide, encourage and assist the students.
- ❖ Be good counselors and facilitators to Students.
- ❖ Everyone must essentially require to observe the scheduled working hours and must perform their duties especially related to students mentoring.
- ❖ Prior permission is to be sought in case of taking leave.
- ❖ Must report to duty on time and remain present during college hours.
- ❖ Follow strictly the rules and regulation laid down under 'Rajasthan Service Rules'.
- ❖ Take utmost care and maintain secrecy pertaining to official documents and must not divulge, alter or forge them.

CODE OF CONDUCT FOR STUDENTS :-

- ❖ Student should be polite, respectful, and well mannered.
- ❖ Student must maintain discipline; in case of violation disciplinary action would be taken.
- ❖ All seniors should exhibit and maintain healthy and decent relationship among all students.
- ❖ Once in the premises, the student must have a concern towards each and every property of the institute and care for it Le handling of furniture, caring for plantations etc..
- ❖ Whenever the students are free from classes they are advised to use the library or engage themselves in same extra or co-curricular activities.
- ❖ Once in the campus students should always have with them their college i-cards.
- ❖ Ragging and eve-teasing is totally banned and would be taken as a serious offence and students are advised not to indulge in any such activities.
- ❖ Every student must stay away from anti-social activities.
- ❖ Students should refrain from scribing on walls and black boards. The campus must be kept clean.
- ❖ Keep in mind the Campus in Polyethene Free and Tabacco Free as well, so everyone is advised to refrain in activity violating this principle.
- ❖ Indulging in malpractices during examinations in taken as a serious offence and completely restricted
- ❖ Overall, the college with its code of conduct to students wishes to inculcate moral values and produce an overall educated citizen to the society.

The Infrastructure

Infrastructure facilities are the key for effective and efficient conduct of the educational programmes. The campus area of the Seth Shree Kedarnath Modi Rajkiya Mahavidhalya Gudha is approximately 30000 sq.mts.

- ❖ At present the college is offering 07 subjects at Under-graduate, 01 for Post-graduate level.
- ❖ The Institution has 12 class rooms, 01 laboratory, 01 huge library and one computer lab and Access of internet is provided to every department, administrative office and library.
- ❖ Computer Labs: 01 fully networked hi-tech computer labs with 24 hour internet connectivity.
- ❖ Smart Rooms: The College does have a smart room.
- ❖ The College has a Basket Ball court, Volley Ball court, Badminton court, T.T. and other playing facilities.
- ❖ The College Library has 10 racks for books stacking, 01 reading room with a capacity of 50 students. One room is for library staff and sufficient infrastructure for display of periodicals/magazines etc.

The Faculty

The College has highly qualified teachers of eminence, 05 faculty members out of total 10 are Ph.D. holders, All dedicated and committed towards the vision and mission of the College. Among them 03 faculty members are approved research guides in various universities. Details about all the faculty members is exclusively given at college web site, which is maintained by a Nodal Officer of Web Page. All faculty members got FDP training in the session 2021-22. Some faculty members are also holding the positions in academic council, board of studies, university sports board and research committees at affiliated university and have made seminal contribution in the betterment of the curriculum. 20 research articles and 06 chapters in edited volumes/books have been published in National/ International journals in last 5 years by the faculty members. Faculty members often attend Workshops, Seminar, webinars and Faculty Development Programmes for enhancing Research Outputs.

General Administration

The College has defined organizational structure for effective decision making and execution of responsibilities. The College comes under the Commissionerate of College Education Rajasthan, Jaipur headed by the Commissioner who manages the Government Colleges of the state, The Principal is the head of the institution at local level. The senior faculty members are given charge of the different units like establishment, accounts and academic to shoulder various administrative responsibilities. The heads/ in-charge of various departments act so by virtue of their seniority and are responsible for the functional activities of the departments. E-governance is fully operational in the areas of Administration, Finance & Accounts, Student Admission & Support and Examinations held in the college.

Financial Management

Finance and Accounts Department working under the supervision and headship of the Assistant Accounts Officer (AAO) with administrative control of the Principal. Every year an Audit from the Directorate/ State checks and verifies the accounts for irregularities if any. Any short comings/objections, raised by the Audit are settled up as per rules and policies. The External Audit is carried out by the auditors from the Office of Accountant General (AG) Rajasthan, Jaipur. The Internal Audit is done by the team from Commissionerate College Education Rajasthan Jaipur. The accounts related to College Development Committee are audited by CA hired for the purpose by the College. In addition, Physical Audit is conducted by the Auditing Party.

Mahavidlaya Vikas Samiti

Mahavidlaya Vikas Samiti (College Development Committee) which comprise of Principal, Sub Divisional Magistrate, two educationists from society, Accounts office, alumni and other stakeholders like students and parents, works as the liaison between the society and the College. It also steers and helps in the effective implementation of strategic planning by giving feedback and generating finance. Regular meetings of Mahavidyalay Vikas Samiti offer a platform to present and discuss the perspective plans of the College and help in effective implementation of institutional policies.

Student Support

Government of Rajasthan provide various scholarships to most of the students mainly belongs to deprived class or groups, these scholarships include CM Scholarship, JRF, SRF, PDF being awarded to meritorious students with financial support from UGC. College also have capacity building mechanism for skill enhancement, and provision of extra remedial classes for students of weaker section. Most importantly, the college has transparent mechanism for timely redress of student grievances through Sampark Portal, Anti Ragging and Woman Sex Harassment Prevention Cell. Students are guided for competitive examinations and counseled for their career. Over all passing percentage is praiseworthy with 92% from which approximately 15% choose for higher education. A good number of students are well placed after completing their education. The College has outstanding performance in extension, social outreach activities and in sports. The performance in cultural activities are outstanding both at inter-College and intra-College level. Students have secured state and university level prizes in sports competition.

Research

Aligning with the present trend of interdisciplinary approach in Higher Education, various departments of the institute interact and undertake interdisciplinary research. Intellectual Property Rights (IPR) cell of college regularly organize talk sessions and workshops with the expert of this field. Such sessions and workshops fulfill student's academic dreams and help in shaping their career. Faculty members often attend Workshops, webinars and Faculty Development Programmes for enhancing Research Outputs. Out of 10 faculty members, 03 faculty members are approved research guides in various universities.

National Service Scheme & Scout

College has a well-developed NSS and Scout wings which are performing very well at the district and state level. The NSS and Scout wings of the College carry out several social awareness programs in the neighboring community through rallies, talks, workshops, and Nukkad Natak etc. The various awareness programs include burning issues such as adverse effects of open defecation, protective measures against seasonal diseases and epidemics, gender discrimination, benefits of hygiene, female feticides, effects of global warming and benefits of plantation trees. They also carry out the central government awareness programs such as Beti Bachao Beti Padhao and Creating awareness among voters and electoral participation (SWEEP) During 2020, 2021 and 2022. The College adopts a village in the neighborhood for social reconstruction work. Comprehensive projects are undertaken by the NSS Volunteers actively carry out programmers like literacy campaign, cleanliness drive, environment friendly initiatives like tree plantation and drive against use of polythene etc. These social activities give not only a sense of responsibility towards community development but also create a sense of awareness among rural people.

Sports

Sports play a significant role in the life of a person. Physical health is equally important as mental health is and therefore an educational institute should aim to nurture both. It inspires the spirit of sportsmanship, teaches goal setting and planning, develops the concept of winning and polishes competitiveness. A sport elevates physical ability and mental agility. The College provides facilities for outdoor games. Various sports played by the students of the College include Hockey, Basketball, Tennis, Kho-Kho, Volley ball, Kabaddi, Athletics and Table tennis. College campus has facility for most of these sports. Most of the students of this College although are from rural background but as do well in their academics they perform well in sports too can be confirmed by the medals won by them in different events. The students participate at different levels beginning from inter-class followed by inter-college, state level, inter-university and reach up to national level. The college has earned proud recognition and history in the sporting events and its students have won individual/group medals and shields. There is a DPE (Director of Physical Education) in the College. Presently the College sports teams under the guidance of DPE work and achieve many laurels. The DPE monitors the maintenance of playgrounds and sports events.

Career opportunities

The aim of the College is to bring out all-round development of the students. The students are oriented by the mentors to achieve their goal even in odd circumstances. Team spirit is instilled among them by giving them different types of responsibilities while organizing different events in the College like cultural programme, competition, seminars etc. In this way team spirit and managerial skill is developed in them. The College always emphasizes on the productivity of the students having focus on the outcome of student with nurturing the values of a responsible Indian citizen. With clarity in fundamental concept, principle and theories of science, and practical skills. The Placement Cell of the college provides opportunities for jobs to the students through various activities like induction program by professionals from companies. A job fair is organized almost every year. YDC also extends its support by guiding students for career and job opportunities.

The Student Union

Student's Union is formed in the college as per the guidelines laid down Lingdoh Committee recommendations and the government of Rajasthan. There are direct elections for the post of President, Vice- President, General Secretary and Joint Secretary and class representative. Student Union representatives play a vital role in planning and execution of all the developmental activities related to academics and administration of the college. President of the student union is the member of Mahavidlaya Vikas Samiti. SU proposes various works to be undertaken on behalf of students and protects the rights of students. SU acts as an important channel for generation of feedback, responses and grievances of the students at large. This helps the college administration to work in the areas demanding immediate attention and resolving of issues.

Academics

As a government institute, Seth Shree Kedarnath Modi Rajkiya Mahavidyalaya Gudha follows the curriculum and course offerings determined by the State Government. Initially established in 2013, the college commenced its journey by offering undergraduate education in seven subjects, including English Literature, Hindi Literature, History, Economics, Geography, Sociology, and Political Science. A significant milestone in 2018-19 saw the college elevated to the post-graduate level. Despite its relatively recent inception, the college boasts immense potential for further development. Currently, the college offers 600 seats for regular undergraduate students and 120 seats at the post-graduate level. Additionally, it serves as a knowledge hub for non-collegiate students, providing guidance on various academic matters. Positioned at the heart of fifty-two villages, the college has become an educational nucleus for rural students, offering educational opportunities even to the most remotely located individuals

INTERNAL QUALITY ASSURANCE CELL (IQAC)

The Institution's quality standards have been given a vital shift in the last few years with the growing demand for skill and capacity building and its linkage with entrepreneurship, development and employability. Since The College does not offer any professional courses, so there is even greater responsibility of equipping the students for better job prospects. Here comes the role of Internal Quality Assurance Cell (IQAC). The IQAC works towards realizing the goals of quality enhancement and sustenance. Suggestions made by IQAC have been executed also at the levels of developing IT Infrastructure, effective teaching, proper allocation and maintenance of funds, research and student support. IQAC ensures involvement of students in the whole process of teaching and learning. IQAC periodically reviews and suggests measures to upgrade the quality of teaching-learning process by way of enhanced academic research, effective training and innovative pedagogies. Some of the measures are taken to review the teaching learning process, operational strategies and learning outcomes

IQAC Strategies: Teaching -Learning and Evaluation

- ✓ The curriculum is constantly reviewed, revised, and updated with relevant and specific suggestions offered, and feedback received from our stake holders.
- ✓ two compulsory subjects Computer Science and Environmental Studies at the first year level expose the learners to latest technology and generate awareness for social and environmental issues.
- ✓ Progression/performance of students are adjudged after every academic session based on their results of annual examination.
- ✓ Measures are taken to make class room teaching more student-centric with emphasis on interactive sessions, field studies, and community activities.
- ✓ Establishment and maintenance of laboratories and making strategies to continually enhancing the facilities for lab work.
- ✓ Promoting women cantered activities under the aegis of Women Cell to provide an extra edge to female students.
- ✓ Besides class room teaching and curriculum, It is mandatory for students seeking admission at the first year level to opt for any of the extra-curricular activities offered by the college. Extra-curricular activities are conducted by Youth Development Centre (YDC), Women Cell, NSS, Ranger, Rovers etc.

IQAC Strategies: Structure and methodologies of operation

Internal quality assurance cell has been Set up recently and working in collaboration with staff members to impart quality education so that the students can become ideal citizen of the country. The planning procedures and implementation of IQAC initiatives for teaching learning reflects in the following:

- ✓ The feedback system in the college is in the form of a questionnaire separate for teachers, students and alumni to render their advice on all aspects related to the development of the college. Feedback regarding curriculum obtained from students teachers alumni is analyzed by IQAC and discussed with the conveners and members of various BOS in the college and later on placed before the Board of Studies meeting in the affiliating university. Feedback from students and student's council is also taken during the NSS camps, seminars and symposiums of the departments.
- ✓ The academic calendar is prepared by the departments for quarterly tests and seminars. This helps in identification of learning abilities and modifications in teaching strategies accordingly.
- ✓ An optimal use is made of the ICT facilities available. To facilitate the learning process all ICT enabled classrooms are effectively used by the teachers for open access and available e resources i.e., LCD, slide projectors, computers, and internet connectivity.
- ✓ Learning Outcomes are displayed on the college website and reviewed by IQAC The same is also discussed with in-charges of various departments and mentors.
- ✓ The IQAC Cell also motivates the faculty to adopt Innovative processes and e resources in Teaching like Shodhganga, Swayamprabha, National Digital library, Power Point presentations, Models Charts, smart classrooms.
- ✓ Conduct of coaching classes helps the students to improve skills to face competitive examinations. Conduct of remedial classes for slow learners so as to improve the learning skills of the student.

FEES STRUCTURE

As Per Government rule college adopted Admission fees Structure for UG & P.G. Classes as per the following List :-

FEES STRUCTURE (2023-24)					
CLASS	B.A.PART 1st YEAR	B.A.PART 2nd YEAR	B.A.PART 3rd YEAR	M.A.PERVIOUS	M.A. FINAL
ITP General Girls	1665	1165	1165	1215	1165
ITP General Boys	1837	1337	1337	1447	1397
ITP SC Boys	1237	737	737	777	727
ITP SC Girls	1245	745	745	785	735
ITP ST Boys	1237	737	737	777	727
ITP ST Girls	1245	745	745	785	735
NITP General Boys	1711	1211	1211	1303	1253
NITP General Girls	1665	1165	1165	1215	1165
NITP SC Boys	1237	737	737	777	727
NITP SC Girls	1245	745	745	785	735
NITP ST Boys	1237	737	737	777	727
NITP ST Girls	1245	745	745	785	735
ITP OBC Boys	1837	1337	1337	1447	1397
NITP OBC Girls	1250	750	750	785	735
ITP OBC Girls	1665	1165	1165	1215	1165
NITP OBC Boys	1242	742	742	777	727
NITP MBC Girls	1250	750	750	785	735
ITP MBC Boys	1837	1337	1337	1447	1397
ITP MBC Girls	1665	1165	1165	1215	1165
NITP MBC Boys	1242	742	742	777	727
PH Boys	0	0	0	0	0
PH Girls	0	0	0	0	0
NITP Gov. Emp. Gen. Girls	1665	1165	1165	1215	1165
NITP Gov. Emp. Gen. Boys	1657	1157	1157	1207	1157
NITP Gov. Emp. SC Girls	1245	745	745	785	735
NITP Gov. Emp. SC Boys	1237	737	737	777	727
NITP Gov. Emp. ST Girls	1245	745	745	785	735
NITP Gov. Emp. ST Boys	1237	737	737	777	727
NITP Gov. Emp. OBC Girls	1250	750	750	785	735
NITP Gov. Emp. OBC Boys	1242	742	742	777	727
NITP Gov. Emp. MBC Girls	1250	750	750	785	735
NITP Gov. Emp. MBC Boys	1242	742	742	777	727
ITP Gov. Emp. Gen. Girls	1665	1165	1165	1215	1165
ITP Gov. Emp. Gen. Boys	1837	1337	1337	1447	1397
ITP Gov. Emp. SC Girls	1245	745	745	785	735
ITP Gov. Emp. SC Boys	1237	737	737	777	727
ITP Gov. Emp. ST Girls	1245	745	745	785	735
ITP Gov. Emp. ST Boys	1237	737	737	777	727
ITP Gov. Emp. OBC Girls	1665	1165	1165	1215	1165
ITP Gov. Emp. OBC Boys	1837	1337	1337	1447	1397
ITP Gov. Emp. MBC Girls	1665	1165	1165	1215	1165
ITP Gov. Emp. MBC Boys	1837	1337	1337	1447	1397

Botanical Garden

College has a botanical garden there are many fruitful, medicinal and rare plants. we are conducting environmental awareness and tree plantation programs through NSS. It also increases beauty of college campus. Our future plan to grow more rare, endemic, endangered plants in our garden.



Digital Amenities

The college has adopted digital learning through ICT as a part of teaching & learning process to enhance the learning experience of the students. It also helps faculty members to develop the additional E-Contents with the help of reference materials. College has installed SWAYAM PRABHA an initiative of ministry of education for students to access educational contents.

The Campus Has A Dedicated 30 Mbps Leased Line Fiber Connection And Wi-Fi Facility For An ICT Enabled Teaching-learning Atmosphere. College has a Smart Class Room also.



Smart Library

College has a well equipped library with reference book, text book, monthly magazines, novels, national and international journals and periodicals. Presently more than 4000 books are available in the library. The library provides to positive peaceful and disciplined environment for studying. All the books are available which are needed for competitive examinations, News papers are also available with a separate reading zone. College library has a setting capacity of about 100 student.



There is a single unit of NSS sanctioned in the college. There are 100 volunteers registered in this unit. It works under the supervision of one Programme Officer. It follows the calendar issued by the Directorate of College Education. Various activities and camps are organized throughout the year.



Sports Facilities & Activities

There are well-furnished play grounds of volleyball, badminton & Table-tennis court in the college premises. Players can practice there. There is a PTI in the college. College teams of various games participate in inter-collegiate tournament, Inter-universities and State level Tournaments every year. College is often given responsibilities to organize inter-collegiate tournaments. Last year we organize inter-collegiate Cross-country both for men and women and Basketball for men.



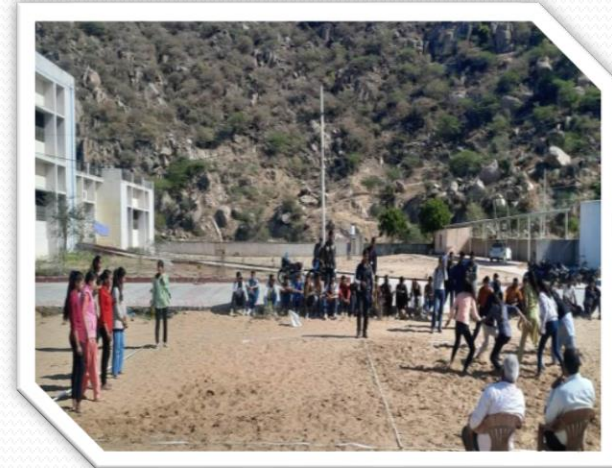
BADMINTON



BASKETBALL



CROSS-COUNTRY



KABADDI

Scholarships

Various types of scholarships are provided to the deserved students of the college through the Department of College Education and the Department of Social Justice and Empowerment.

Regular students can apply for these scholarships. They are as follows:

1. CM Higher Education Scholarship
2. Kali Bai Meritorious Scooty Scheme.
3. Devnarayan Scooty & Incentive Scholarship Scheme.
4. Social Welfare Department Schemes
5. National Scholarship Portal Schemes, Provided by MHRD, GOI



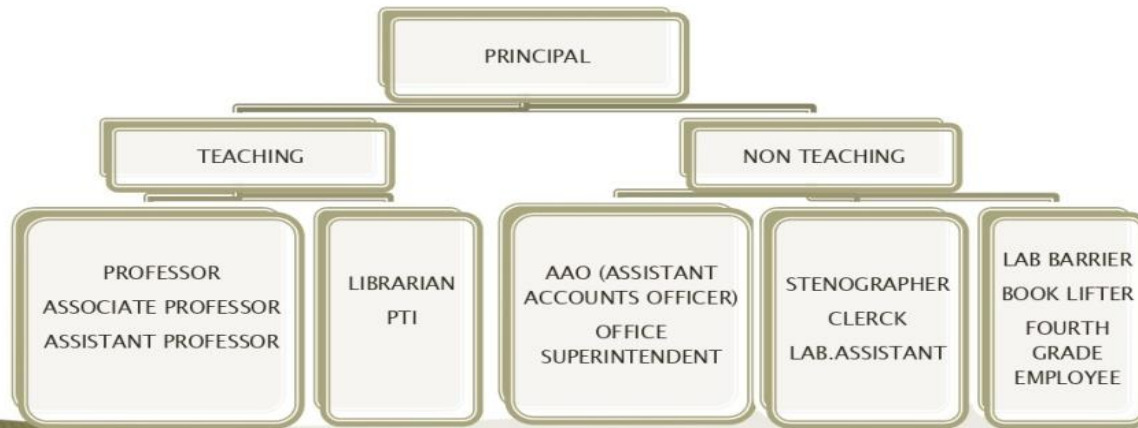
Future Road Map

College Future Plan to Establish These Facilities :-

- Science Faculty
- PG In Various Subjects
- NAAC Grade
- Solar Enrgy System
- Auditorium
- Cricket, Football, Tennis Play Grounds
- Full Campus Wi-Fi
- College Canteen
- NCC
- Alumni Association etc.

ORGANOGRAM

SETH SHREE KEDARNATH MODI RAJKIYA MAHAVIDHALYA, GUDHA (JHUNJHUNU)





THANK YOU !!